

# Supporting Families with Children who Develop Differently

## Enabling Nurturing Care : the Resource Modules for Home Visitors

Zorica Trikic  
Senior Program Manager, ISSA

Conference  
Early Childhood Intervention  
Strengthening Systems and Empowering Families  
June 05 & 06, 2018  
Minsk, Belarus

## Core beliefs/values under-pinning the Resource Modules

### All parents

- have **hopes and dreams** for their children and want the best for them
- have **the capacity to support their children's development, learning and success in life** – strength based approach.
- are **best treated as equal partners**

*The primary responsibility for building partnerships with parents and family rests with service providers*

(Henderson, A., V. Johnson, K. Mapp, and D. Davies. 2007)

### Service providers

- **strength based approach** - building on existing knowledge and experience in the workforce
- need to be **encouraged and empowered** for prevention and timely intervention
- have capacity to shift from **passive** implementers to **active and reflective** creators of practice with **voice** and **power** to create change
- should be “**warm professionals**”  
“**caring for and empowering families;**  
**building partnerships**”

**The QUALITY of the  
workforce is crucial**

# All families need some support

## Some families need all the support they can get

Poor, socially excluded,  
but many are coping



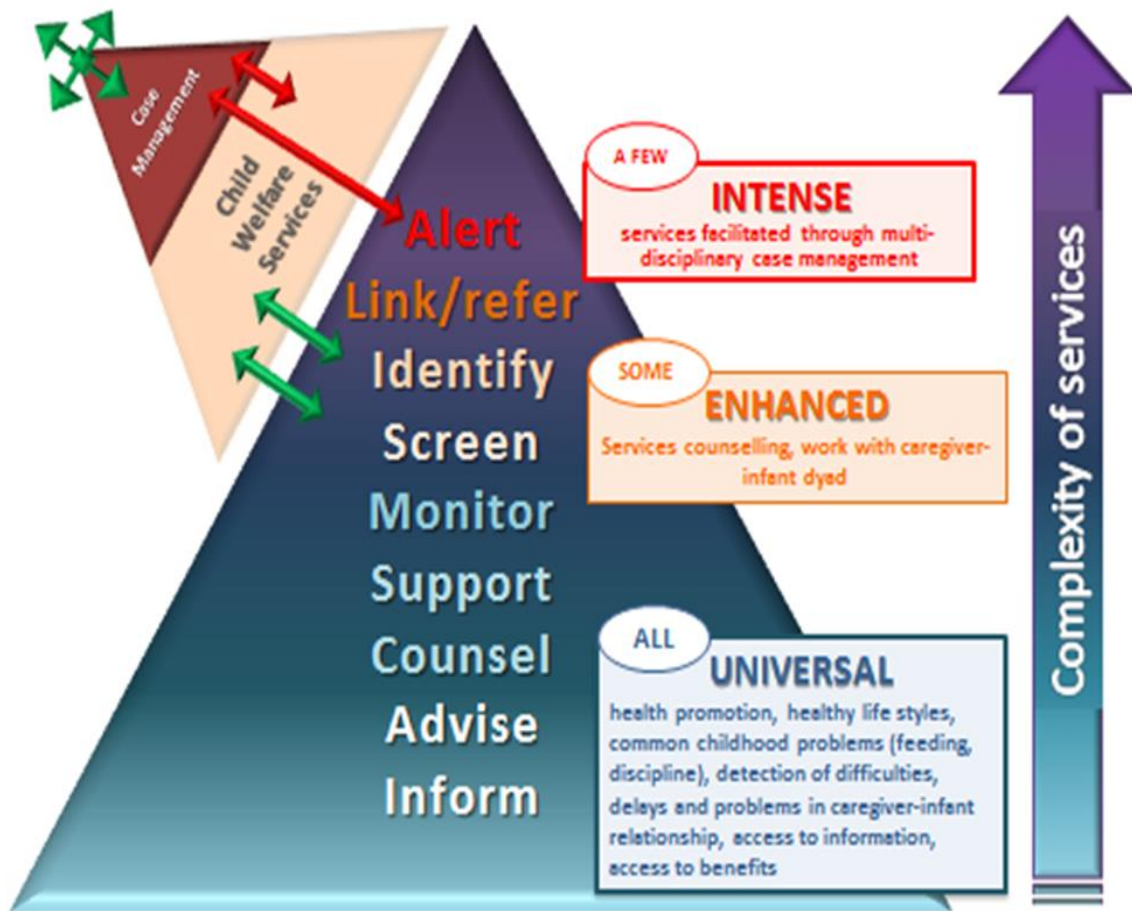
Maternal depression  
Child or adult disability  
Abuse & neglect found in all walks of  
life...



# UNICEF ECA Home Visiting Universal>Progressive Model

Families from all walks of life have challenges - some families face multiple social disadvantages

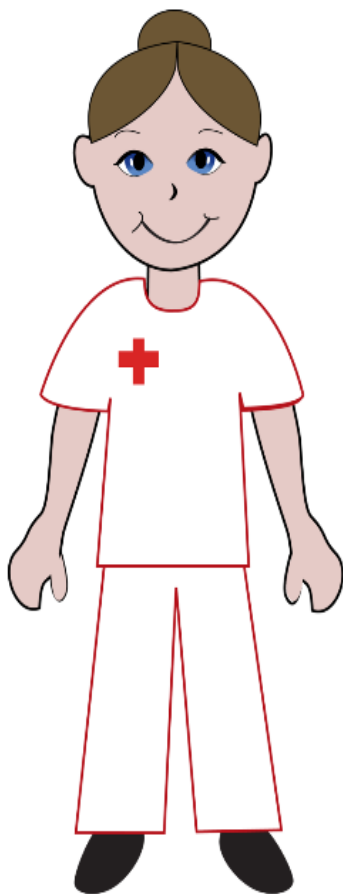
- The same basic package for all
- Continuum of care
- Enhanced and intense services and inter-sectoral coordination for families with identified special needs – “team around the child”



# The Health Sector

Most countries retained home visiting services, but

- Narrow medical focus
- Inherent inefficiencies
- Limited/no ECD or parent support content



## Why Home Visiting?

Extensive literature...

<b>Health Facility</b>	<ul style="list-style-type: none"> <li>– Limited time</li> <li>– Social distance and roles</li> <li>– Lacks training in counseling and engaging also the most vulnerable</li> <li>– Lack of insight into family's daily challenges</li> </ul>
<b>Home Visiting</b>	<ul style="list-style-type: none"> <li>– Invited into the family's space → reduced social distance</li> <li>– More time and opportunity for parent to ask, voice concerns, discuss, plan</li> <li>– Home situation is visible</li> <li>– Multiple visits provide continuum in the relationship</li> <li>– Home visitor known in community, trusted, and service not stigmatized</li> <li>– Utilizes community services including parenting groups</li> </ul>
<b>Parent Groups</b>	<ul style="list-style-type: none"> <li>– Issues with sustainability, access and demand issues for certain groups</li> <li>– Can be topic and needs-focused</li> <li>– Can strengthen peer support network and empowerment</li> </ul>



# Existing Resource Modules – Open resource



## The Modules...

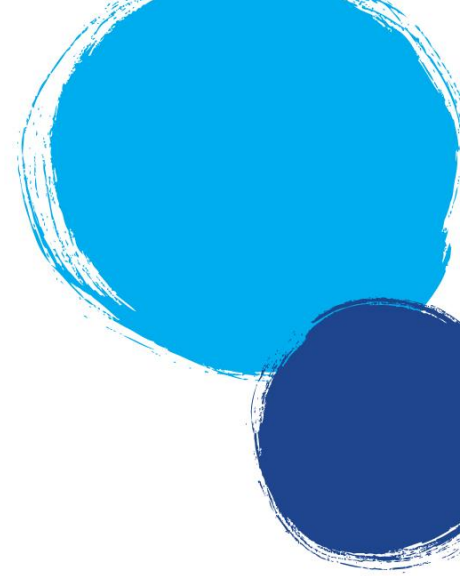
Are <b>not</b>	They <b>are</b>
<ul style="list-style-type: none"> <li>• A finished product to be rolled out</li> <li>• A «canned» (fixed) approach that can be taken from country to country</li> </ul>	<ul style="list-style-type: none"> <li>• A consolidation of evidence, attitudes and practices</li> <li>• “living documents” which can be updated</li> <li>• A foundation for country adaptation</li> </ul>

Pick and mix



# Structure of the Modules

- Theory
- Self assessments
- Reflections
- Exercises
- Case studies
- Examples from the practice
- Videos
- Additional readings





# Supporting Families for Nurturing Care

- IMCI
- BFHI

- IYCF
- Responsive Feeding

## KNOWLEDGE

- Child Development
- Children Who Develop Differently
- Parental Wellbeing
- Gender
- Father Involvement
- Stigma/Discrimination

## SKILLS

- New Role of HV
- Inter-personal Communication
- Monitoring & Screening
- Working with Other Services
- Supervision

- Love, Talk, Play Read
- Transition to Early Education

- Attachment
- Care for Child Development
- Parenting Challenges

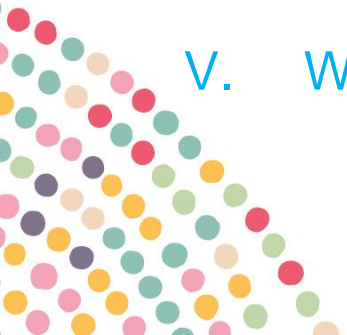
- Home Environment & Safety
- Child Maltreatment



All modules refer to supporting parents  
of children with developmental difficulties

5 Modules which are of utmost relevance to this issue:

- I. The Early Childhood Years – a time of endless opportunities
- II. Working Against Stigma and Discrimination – promoting equity, inclusion and respect for diversity
- III. Children who Develop Differently – children with disabilities or developmental difficulties
- IV. Developmental Monitoring and Screening
- V. Working with other Services



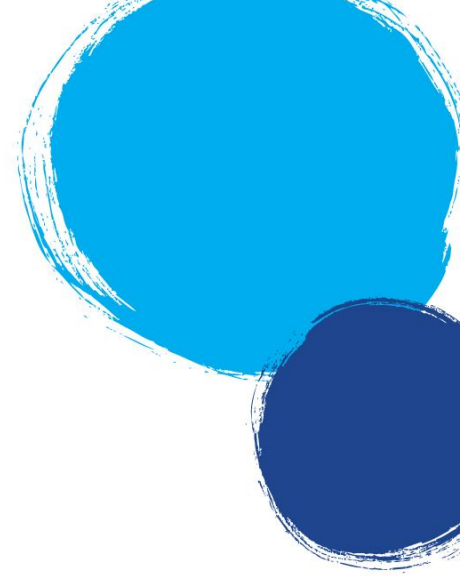
**Module: Working Against Stigma and Discrimination – promoting equity, inclusion and respect for diversity**

*Emphasizes how to deal with personal misconceptions about families and approach every family with respect and empathy to empower and support them*



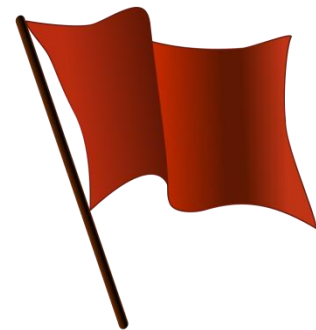
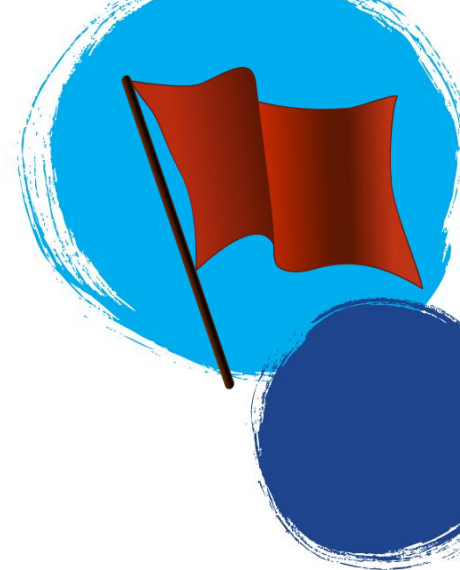
## ***Module: Children who Develop Differently – children with disabilities or developmental difficulties***

***Addresses different causes of developmental delays and the role of home visitors prevention of delays, early identification of potential difficulties, taking action as needed and supporting parents.***



## *Module: Developmental Monitoring and Screening*

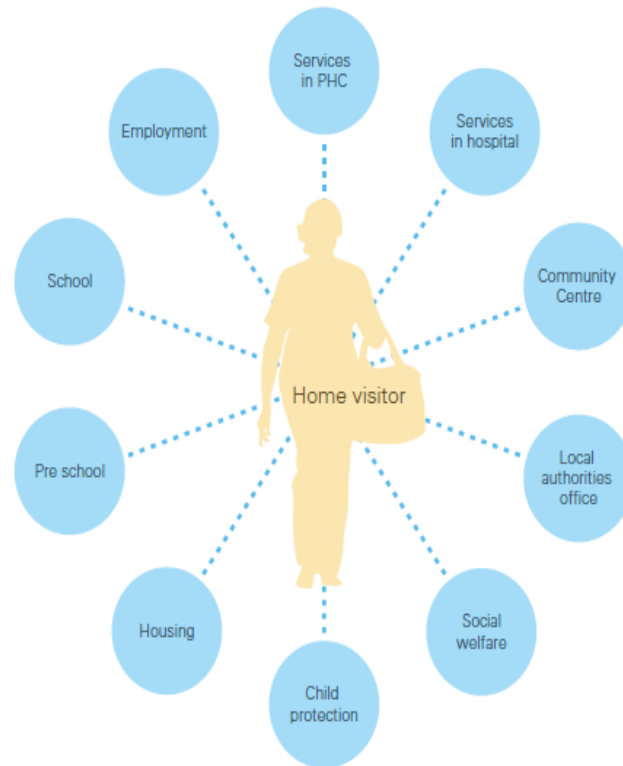
*Highlights the importance of early identification of disabilities and/or developmental difficulties and the unique position of home visitors to see the child in the context of the family.*





## Module: Working with Other Services

*Describes the need for holistic, family centered and coordinated services that place the very young children at the center as well as the limits of the role of home visitors*



# Thank you!



**Zorica Trikić**

Senior Program Manager

[ztrikic@issa.nl](mailto:ztrikic@issa.nl)

International Step by Step Association (ISSA)

[www.issa.nl](http://www.issa.nl)